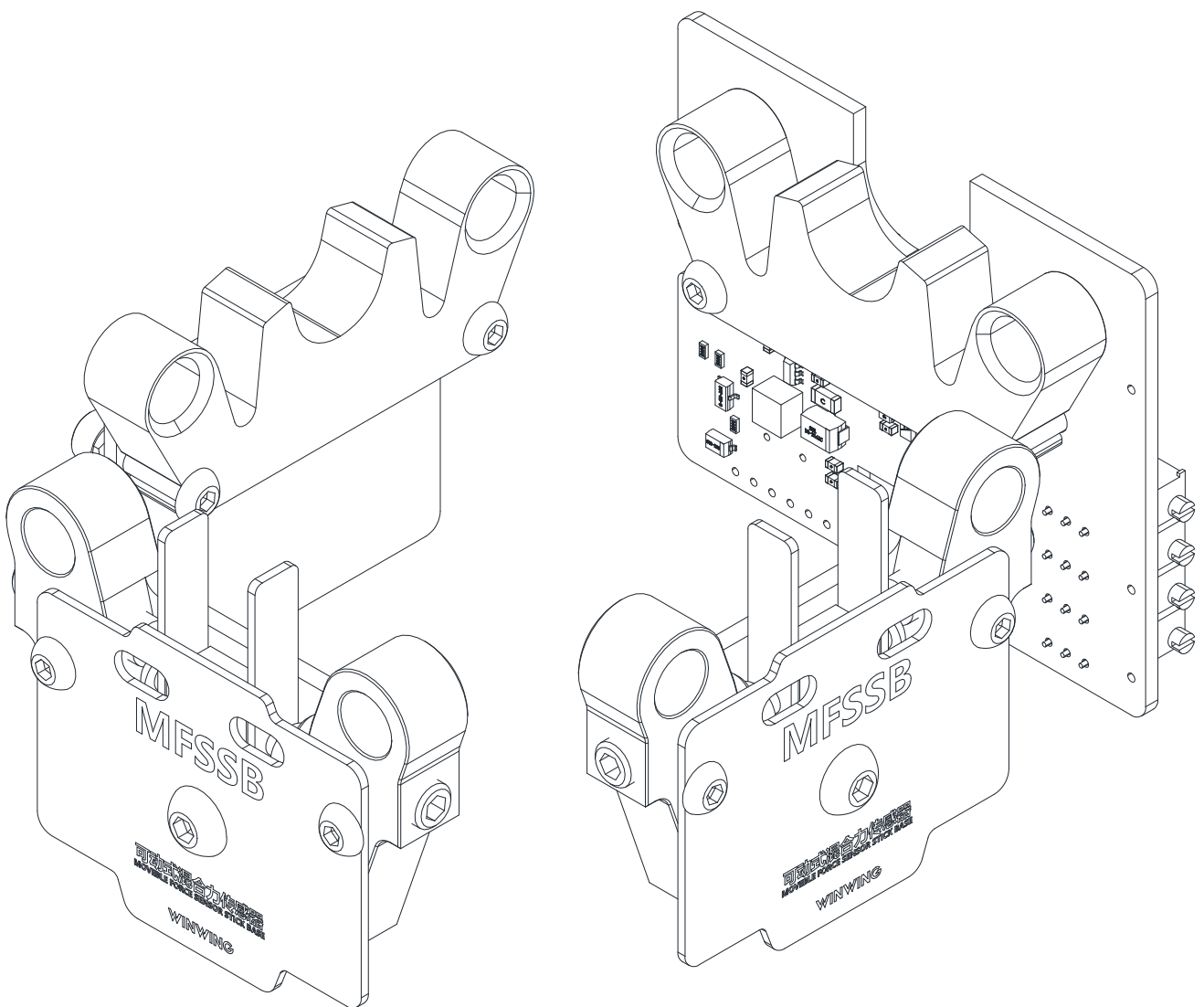


EX2-J2-2

User Manual V1.2 2023.02



Contents:

Contents in the box..... 1

1 Parameters..... 1

    1.1 Mechanical parameter..... 1

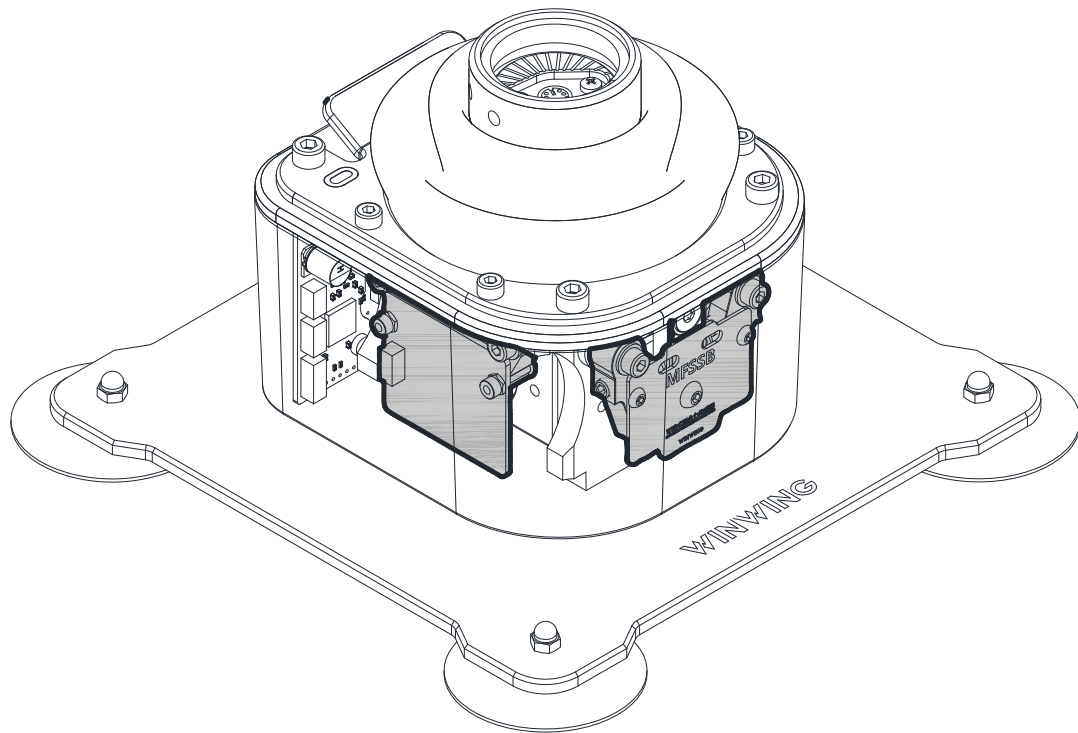
    1.2 Electric parameter..... 1

2 Installation of Limit Reeds..... 3

    2.1 Disassembly..... 3

    2.2 Assembly..... 4

## Contents in the box



This product has been pre-installed to J2-2-BASE

## 1 Parameters

### 1.1 Mechanical parameter

1. The deflection of the movable area is  $\pm 1$  degree;
2. The stick force in the movable area can be adjusted separately (Please refer to the installation of 2 limit reeds for details);
3. The maximum working load under the default assembly is 6kg.

### 1.2 Electric parameter

#### 1. Force-Displacement combined mode

The output is determined by both the force and position sensors. You can set the mixing ratio of how the physical movement contributes to the overall output. The larger the value, the more influence the movable area will make on the final output, which will be more suitable for easy and accurate operation. 0% will make the movable area a dead zone. You can also change the maximum available stick force ratio of your input.

#### 2. Force only mode

The movable area does not efficiently output and exists as a mechanical dead zone. The maximum available stick force ratio can be customized.

### 3. Fully realistic mode

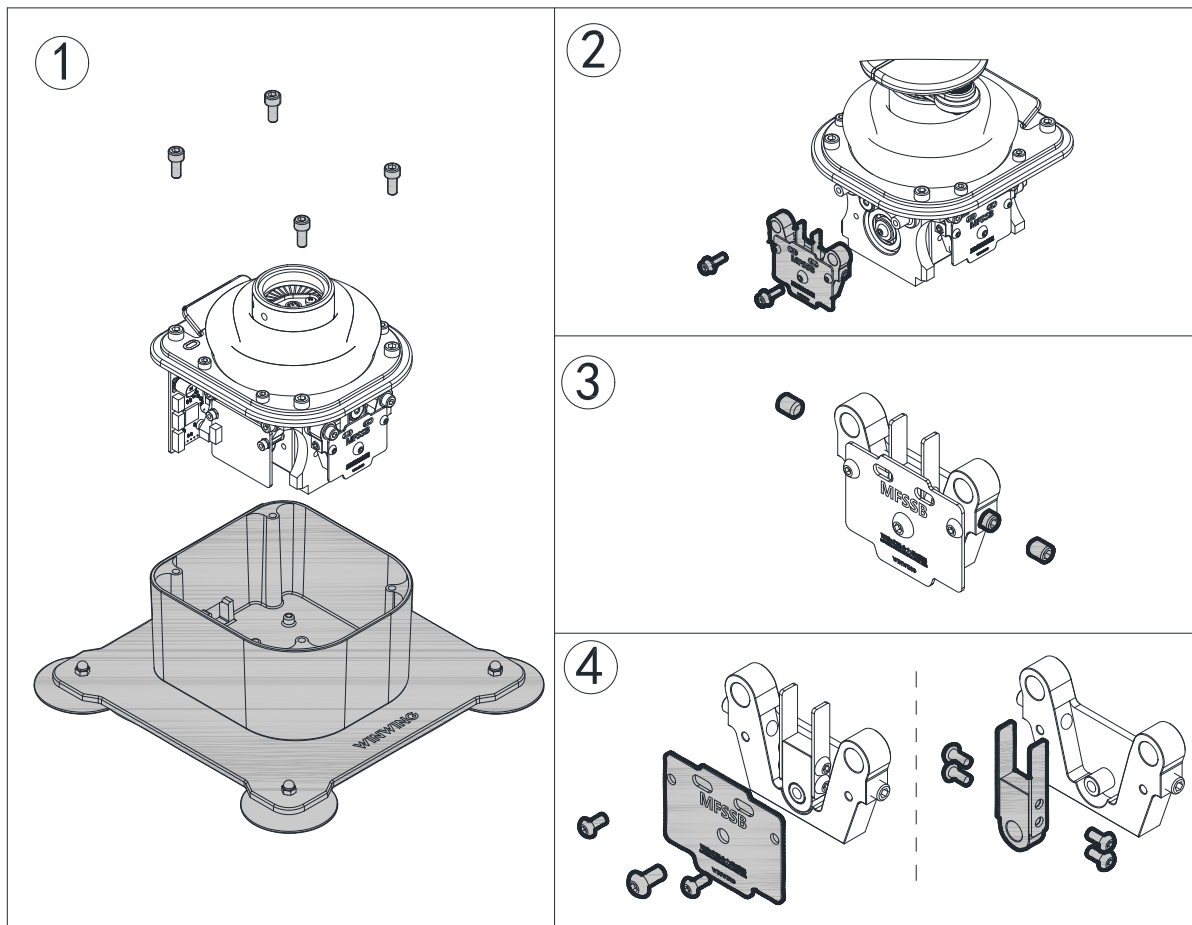
This mode is a special gift for professional virtual aviators who want to loyally simulate the real operation of the F-16 sidestick controller (Not recommended for ordinary players). The movable area will contribute to 100% output. When the stick reaches full deflection, the output reaches 100%.

Note: two or three limit reeds might need to be installed as the aviator' s preference for strength.

## 2 Installation of Limit Reeds

### 2.1 Disassembly

- ① Remove the four M5 screws on the top, then take out the main part;
- ② Remove the screws and gaskets, and remove the main part;
- ③ Remove the outer two lock screws and unscrew the inner two lock screws;
- ④ Remove the screws as shown and take out the decorative plate and assembly, remove four screws of the main part, then remove the limit reeds;



## 2.2 Assembly

- ① Install the limit reeds and tighten the four screws, install the limit reeds and decorative plate on the assembly and tighten the lock screws on both sides;

Note: A maximum of three limit reeds are installed on one side.

- ② Install the assembly to the base and tighten the screws and gaskets;

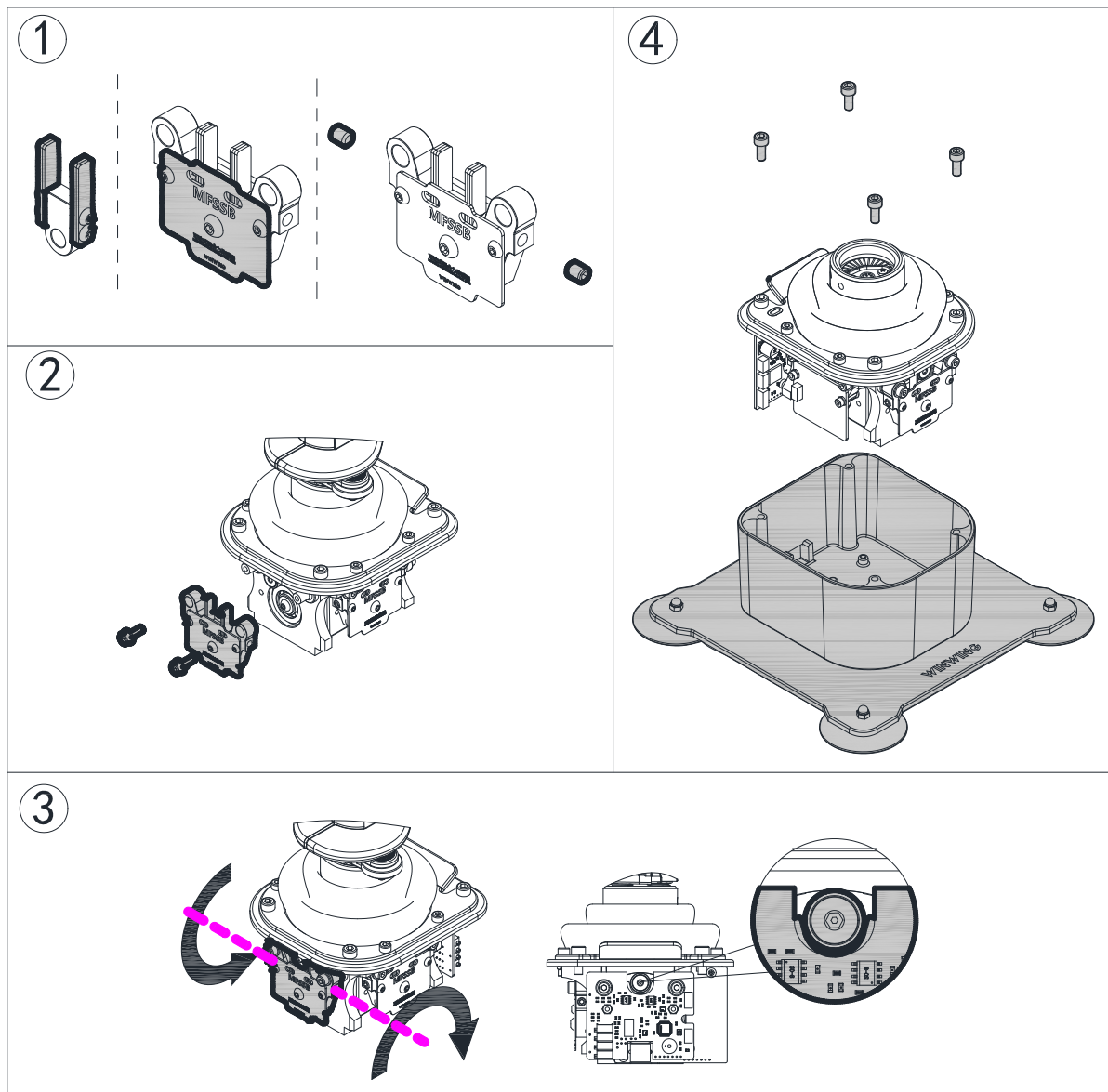
Note: Gasket should be distinguished from front and back, you can move the joystick to deflect the limit reeds on the bearing side in order to be pressed into the assembly

- ③ Adjust the lock screw on both sides so that the travel of the movable area is consistent.

After confirmation, screw the lock screws on both sides to prevent loose;

Note: Visually examine the bearing spacing on the PCB side and pull the joystick to judge the degree of adjustment, if you install three limit reeds, the anti-loose screws cannot be installed.

- ④ Close the assembly and shell, and clockwise tighten the four M5 screws under the removal.



**\* This is the final version of the manual, all update will be made online.**

**成都翼胜科技有限责任公司**

**WWW.WINWING.CN**

**INFO@WINWING.CN**

**High-tech International Enterprise Zone No.19 Building,Changshengqiao Road**

**1111#, Pidu District, Chengdu,China 610000**