

Contents :

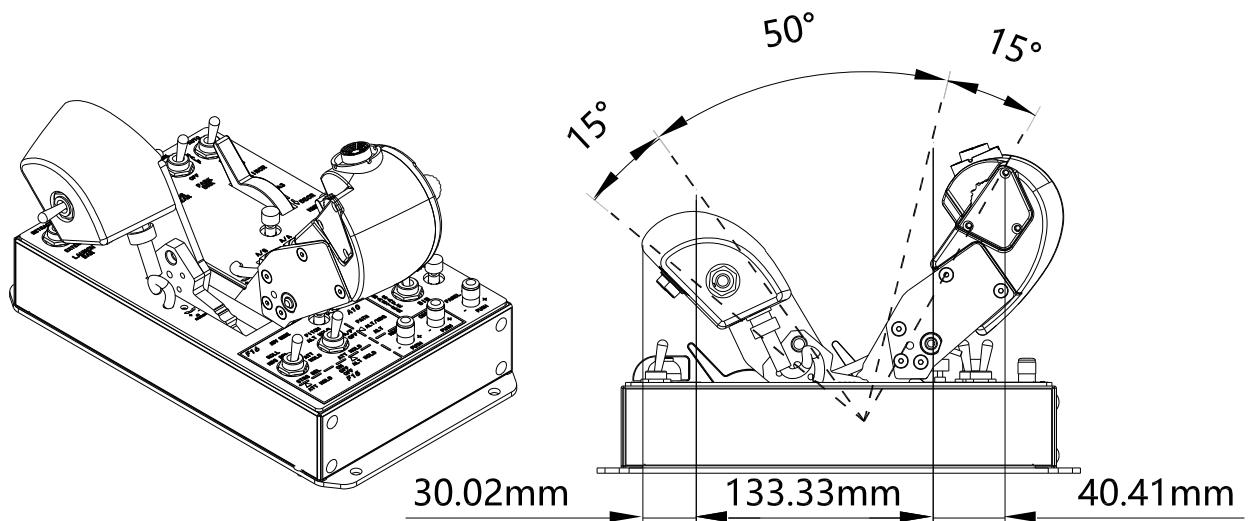
| | | |
|----------|----------------------------------|----------|
| 1 | Contents in the box | 1 |
| 2 | Functions | 1 |
| 2.1 | Parameter | 1 |
| 2.2 | Grip Function..... | 2 |
| 2.3 | Sync lock..... | 2 |
| 2.4 | Friction adjustment..... | 3 |
| 2.5 | Additional function..... | 3 |
| 3 | Dimension | 3 |
| 4 | Assemble | 3 |
| 4.1 | Parts assembly | 3 |
| 4.2 | Desktop base plate..... | 5 |
| 5 | Installation..... | 5 |

1 Contents in the box

| | | |
|---|--|---|
| 1 | T2-Base | 1 |
| 2 | F18 Left throttle grip | 1 |
| 3 | F18 Right throttle grip | 1 |
| 4 | Tool bag (Allen wrench) | 1 |
| 5 | Accessory (Connection panel,suction panel X 4,Screw X 6,USB cable) | 1 |
| 6 | 说明书 | 1 |

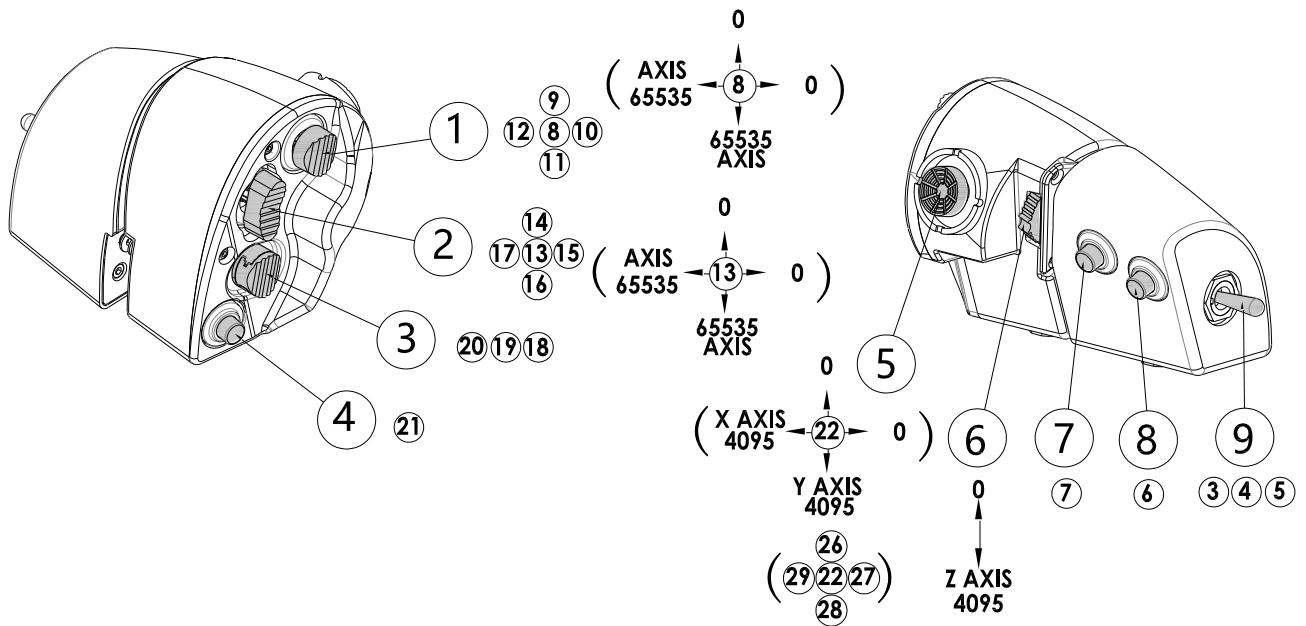
2 Functions

2.1 Parameter

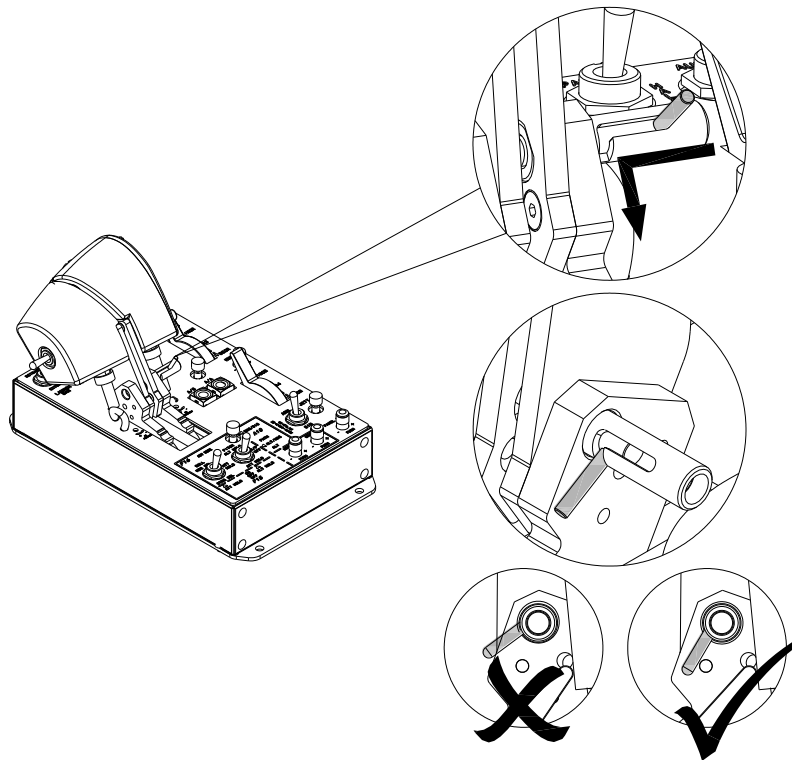


- 1 Left/Right grip total angle 80° . Full stop 15° , normal range 50° , after burner 15° ;
- 2 Adjustable back-lighting;
- 3 Adjustable friction;
- 4 Sync lock can be dis-engage or engaged for independent or connected operation.

2.2 Grip Function

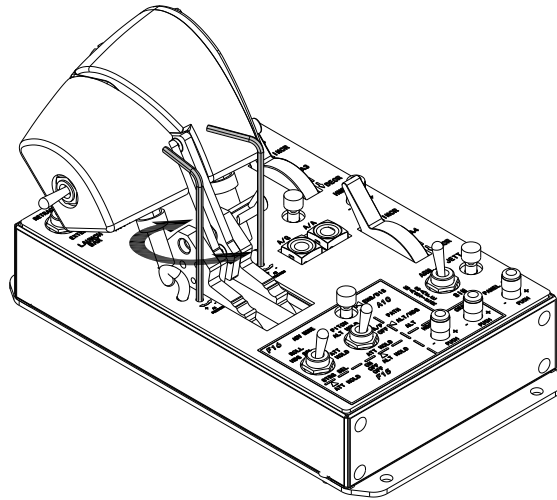


2.3 Sync lock



Align the grip and engage the sync lock to the position shown in picture for connected operation.

2.4 Friction adjustment



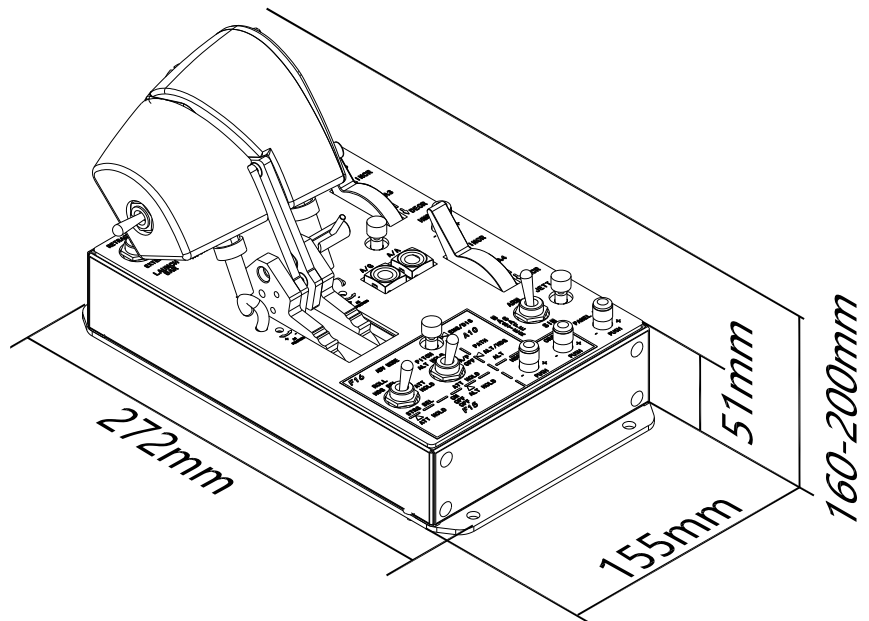
Use the allen wrench to adjust friction. Clockwise for increase friction, CCW for decrease friction

2.5 Additional function

More type of grip is under review, change the grip will cover more type of aircraft. Please follow us on Facebook for news.

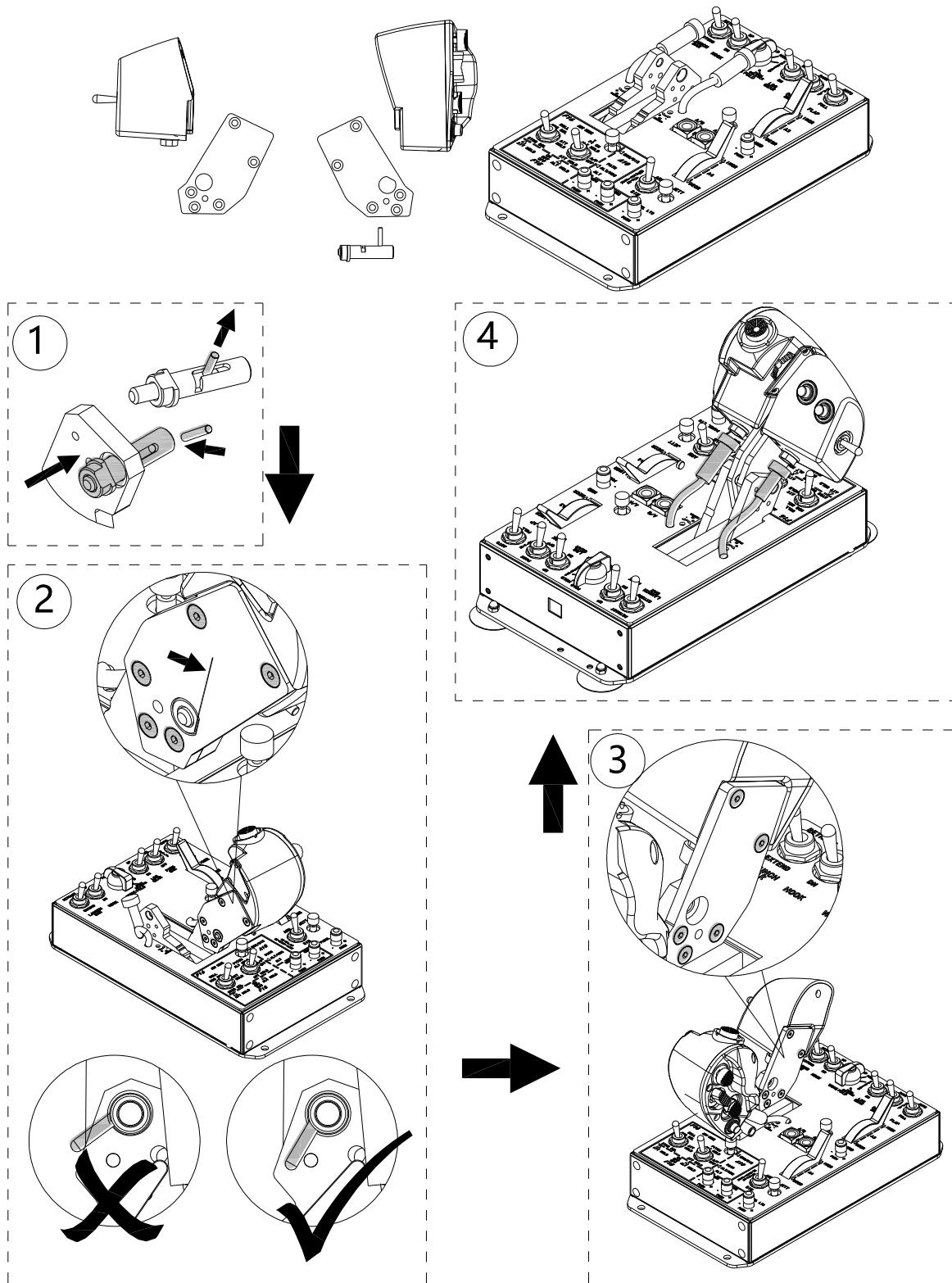
3 Dimension

Product dimension
10.7in * 6.1in* 6.3in - 7.8in
Weigh 4.4 lb



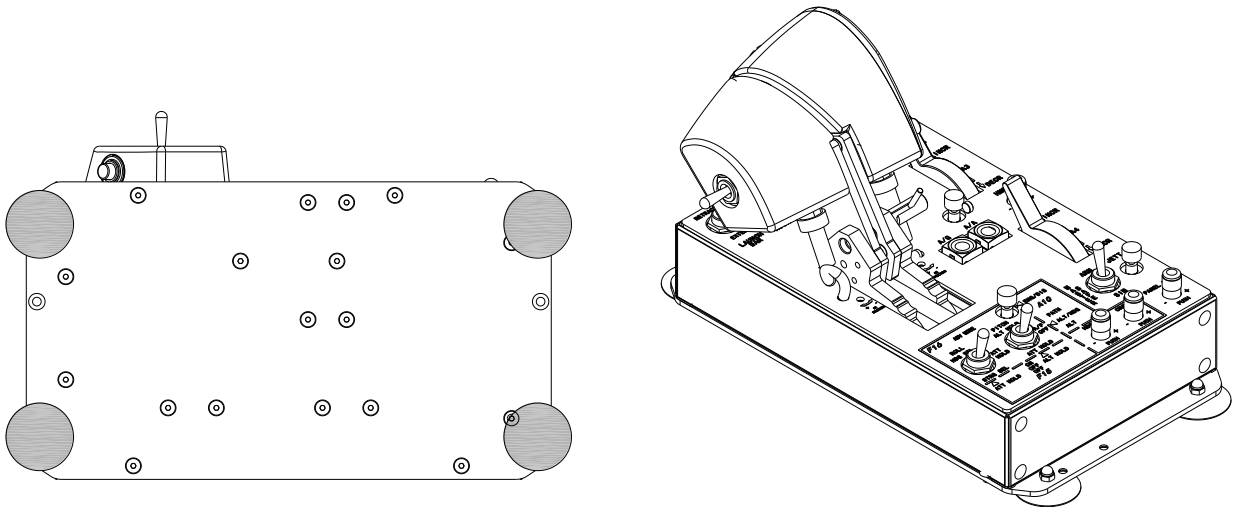
4 Assemble

4.1 Parts assembly



- 1 Unscrew the Sync Lock, attach it to grip handle and screw the Sync lock
- 2 Assemble the right grip, connect the grip panel and grip with 5 screws.
- 3 Repeat the process for left grip
- 4 Plug in the cord for the grip.

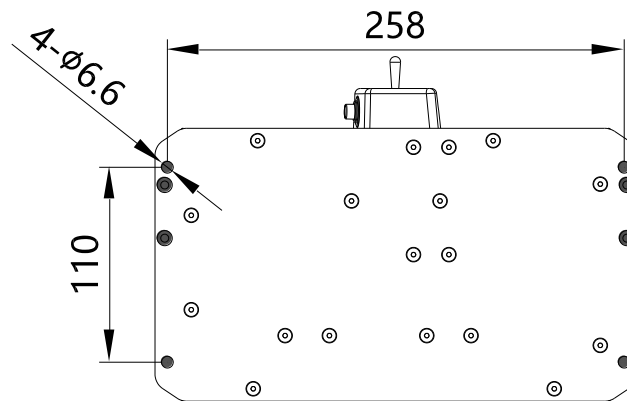
4.2 Desktop base plate



- **Unscrew the suction panel screw, re-attach the suction panel to the bottom plate.**

Clean the desktop and suction cup for better friction

5 Installation



Bottom screw hole for reference on other product mount.

* This is the final version of the manual, all update will be made online.

成都翼胜科技有限责任公司

WWW.WINWING.CN

INFO@WINWING.CN

成都市郫都区现代工业港长生桥路 1111 号 19 栋